



Add : NO.2339, Fengchan Road, Fengdong New District, Xi'an City, Shaanxi Prov, China
Sales Tel : +86-29-38001214 Service Tel : +86-29-33687710, 4006-863-853
Website : <https://www.tonlyoverseas.com>

Local contact



TLE120

pure electric
off-road dump truck

Rated load capacity: 75000kg
cargo bucket capacity: 45m³



To be the leading supplier of engineering transportation solution and equipment

TLE120 pure electric off-road dump truck

- It adopts TONLY TL889A chassis, which has the largest No.1 market share. The chassis is mature and reliable, and has strong applicability. Equipped with the industry's advanced EIC system, the quality is stable and the performance is reliable.
- Pure electric drive, low noise, zero emission, green environmental protection.
- Full hydraulic steering system and emergency steering system, more light, reliable and safe.
- Heavy-duty downhill energy recovery can save costs by 70-95% compared with fuel trucks.
- It adopts lithium iron phosphate battery, which has high charging power, long cruising range and large energy recovery space.



TLE120

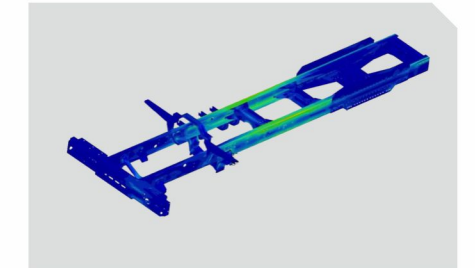
01 Cab

- Fourth generation cab based on industry standard, obtain the FOPS&ROPS certificate;
- Forward-leaning windshield, better vision, prevent falling objects;
- Backwards opening door, convenient exit from danger after collision;
- Through beam + bumper + anti-collision beam structure, safe and more effective.



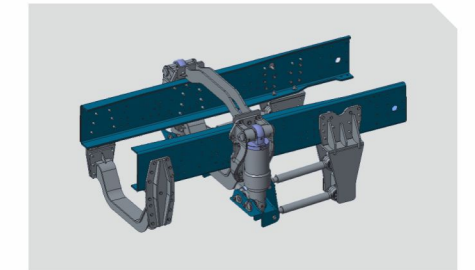
02 Main Frame

- The unique three-layer plate of chassis with flexible frame in the industry. Large load capacity, strong impact resistance and long service life.



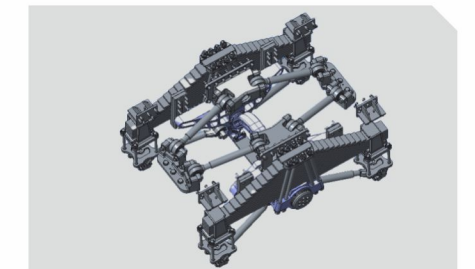
03 Front suspension

- Hydro-pneumatic suspension, ring beam type structure, professional adjustment, meet both empty and full loading conditions, high reliability and comfort.



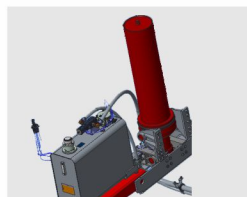
04 Rear suspension

- Leaf spring + balanced suspension + reverse splayed thrust rod structure increases the lateral stability of the truck, improves the stress of the leaf spring and improves the reliability of the suspension system.



05 Lifting system

- HYVA mining cylinders are high-quality and highly adaptable; unique safety protection functions ensure the safety of drivers and trucks.



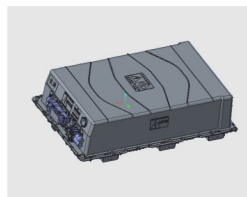
07 Steering system

- The specially developed full hydraulic steering system is matched with the optimal electric steering pump for fast response; the optimized design of the steering hydraulic cylinder ensures the reliability of the steering system and the ease of operation and sensitivity.



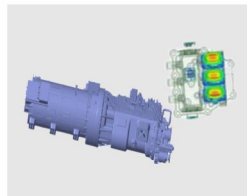
09 Power battery system

- CATL lithium iron phosphate fast charge battery, short charging time, liquid cooling and thermal management system, has good consistency and long cycle life.



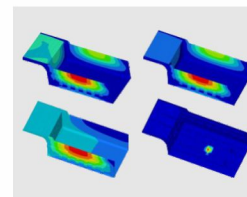
11 Electric Drive Assembly

- Equipped with a high-efficiency dual-motor drive system specially designed for mines, integrated with Fast pneumatic AMT shift control, with strong drive capability, good reliability and applicability



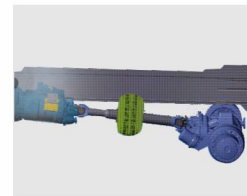
06 Cargo Body

- Strengthen beams + reinforced frame structure with light weight, strong rigidity, impact resistance, high wear resistance, and small dynamic load deformation.



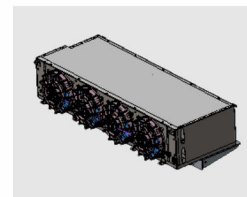
08 Braking System

- With the support of the integrated four-circuit braking system, motor feedback braking and eddy current braking, the braking performance is stronger and the safety performance is higher.



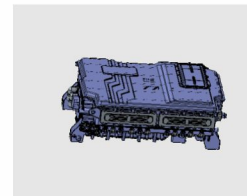
10 Battery Thermal Management System

- The water-cooled battery thermal management system with multiple working modes, can operate under different ambient temperatures to ensure the safety and stability of the battery.



12 Electric Drive Control System

- Special integrated controller for mining trucks, with highly integrated multiple functions. High power density, strong overload capacity, strong environmental adaptability, long design life, and have IP67 protection level.



Main Configuration and Technical Parameters:

Model	TLE120
Brand	TONLY
Drive mode	6×4
Standard bucket capacity (m³)	45
Kerb weight (kg)	45000
Rated payload (kg)	75000
GVW (kg)	120000
Dimensions (mm)	9925×3960×4260(reference)
Wheelbase (mm)	4275+1750
Wheel track (mm)	2770/2620
Minimum ground clearance (mm)	340
Approach angle / departure angle (°)	26.5/48
Maximum speed (km/h)	≥40
Maximum climbing degree (%)	≥30
Minimum turning radius (m)	12.4
Maximum angle of bucket lift (°)	48
Rated power (kW)	422/563/700
Load (t)	30+45+45
Tire Model	460/95R25

